

What is deciding pasture abandonment in mountain landscapes – a fuzzy cognitive model applied to Serra da Estrela, Portugal

Catarina Esgalhado, Maria Rivera, Teresa Pinto-Correia & Stefano Targetti

IUFRO DIV 8

Évora, 2023

Introduction

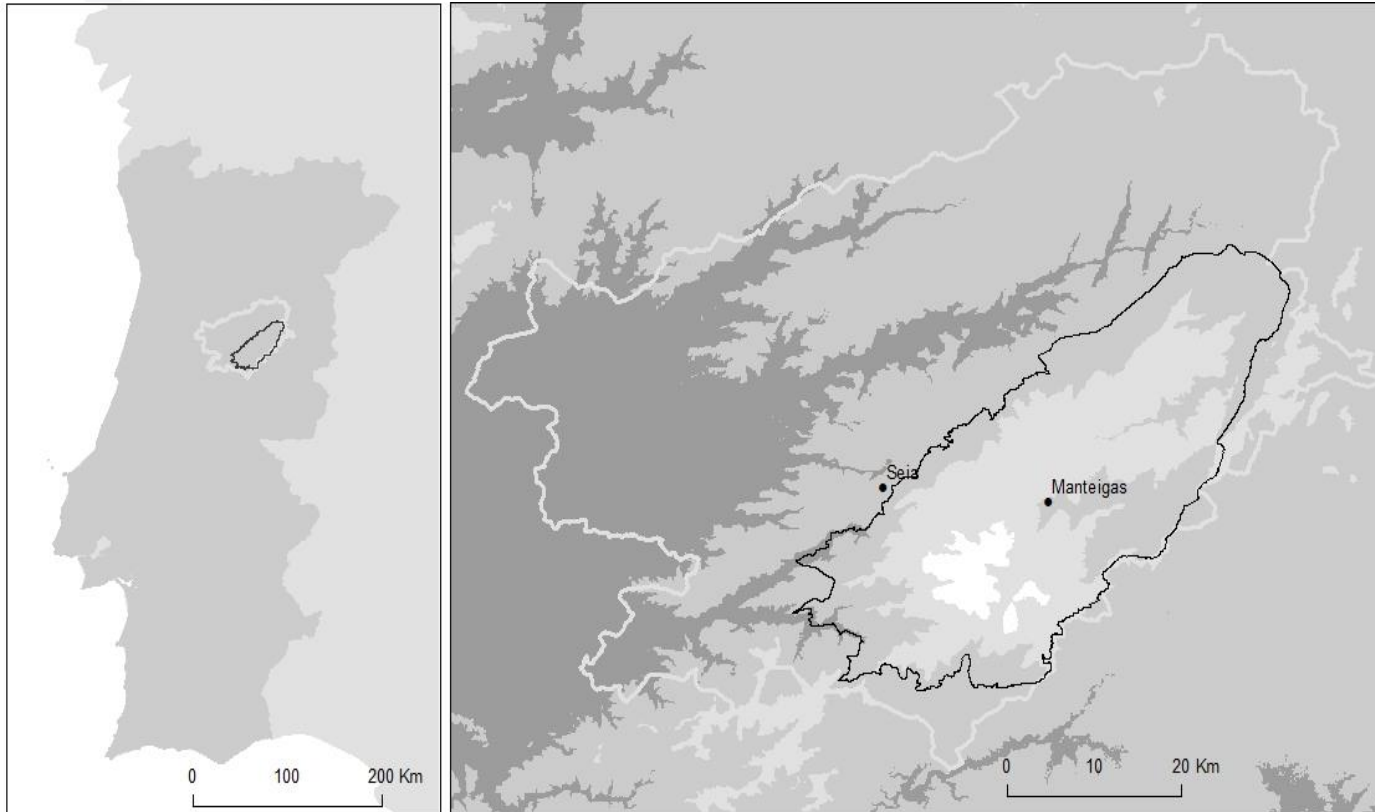
Pastoral systems maintain open areas in forested landscapes

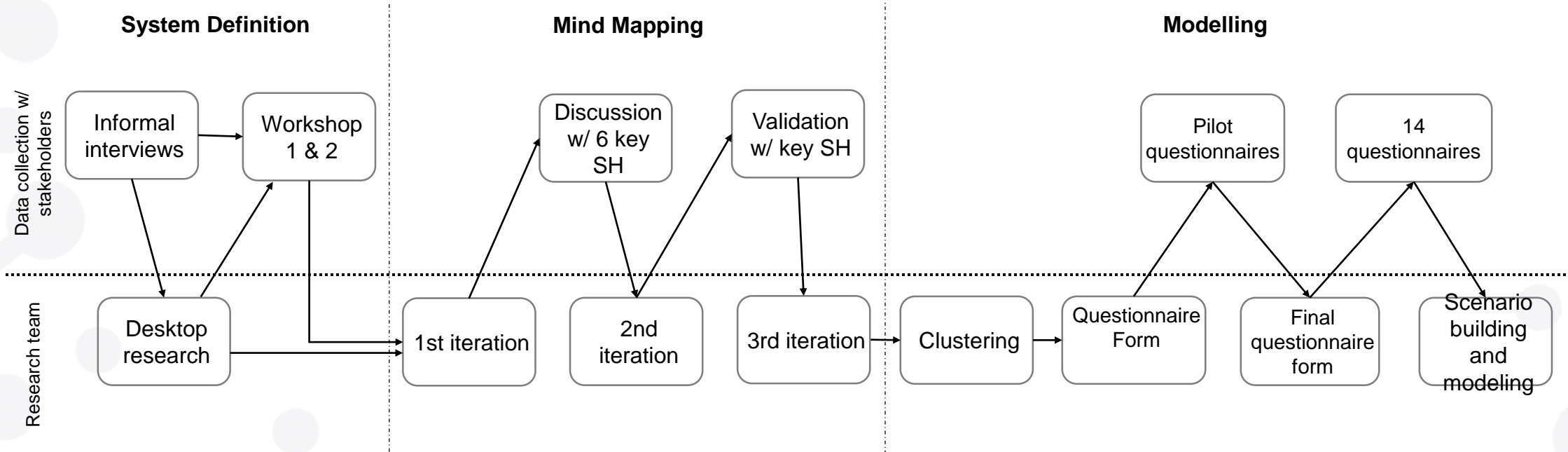
Biomass accumulation contributes to increase the fire connectivity and fire intensity

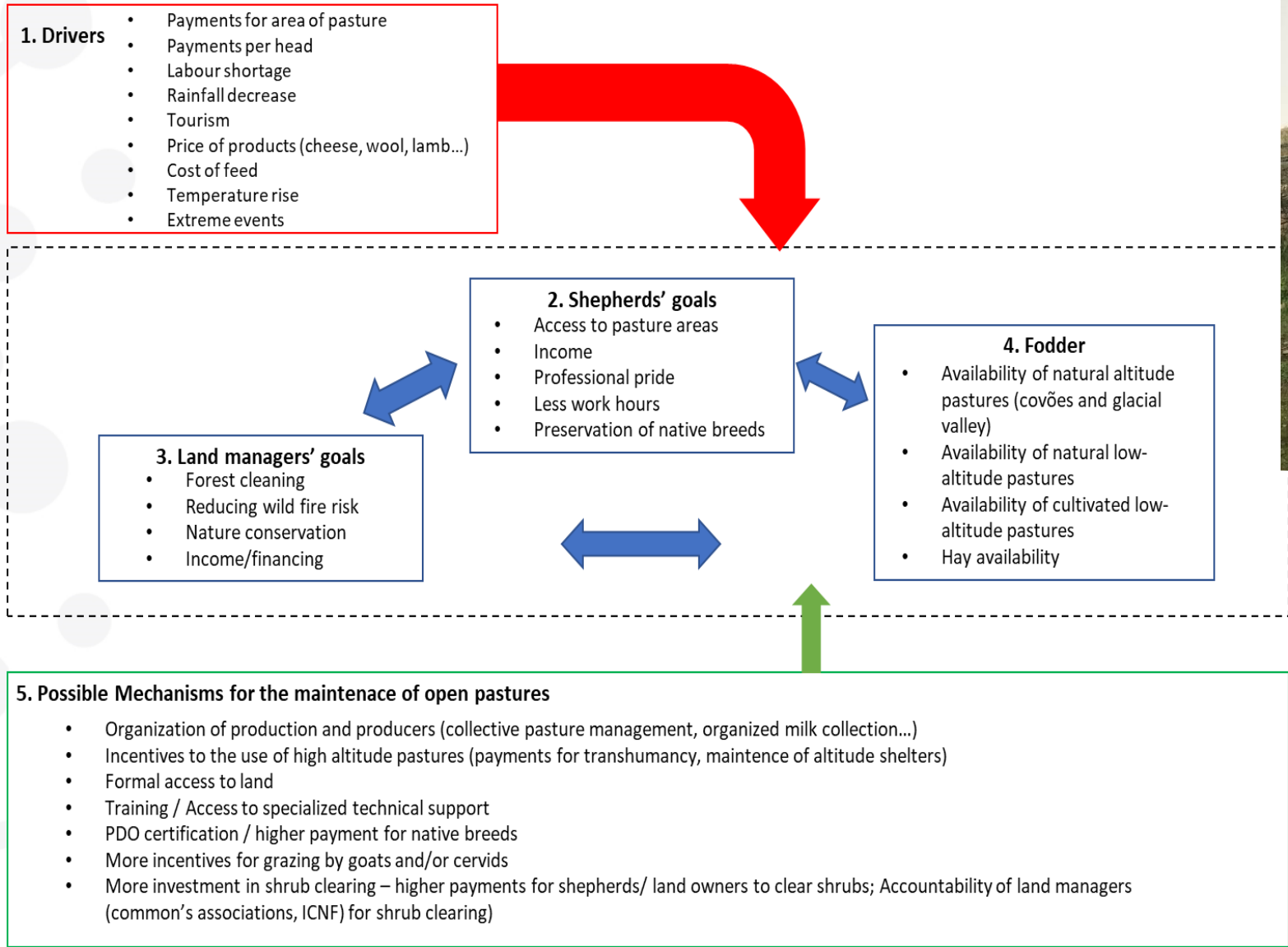
Extensive grazing systems can hinder shrub encroachment and contribute to a discontinuous landscape.



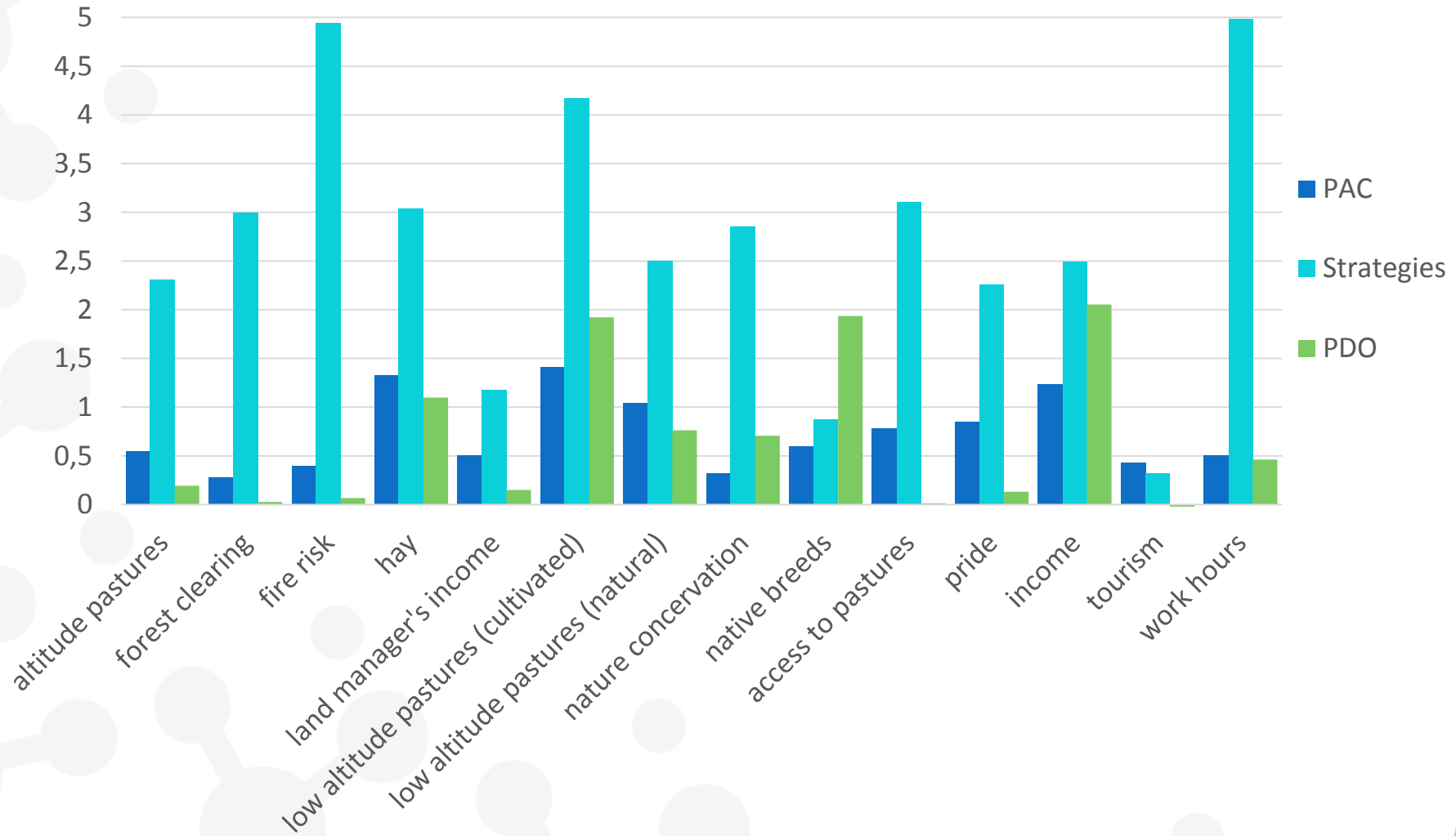
Serra da Estrela





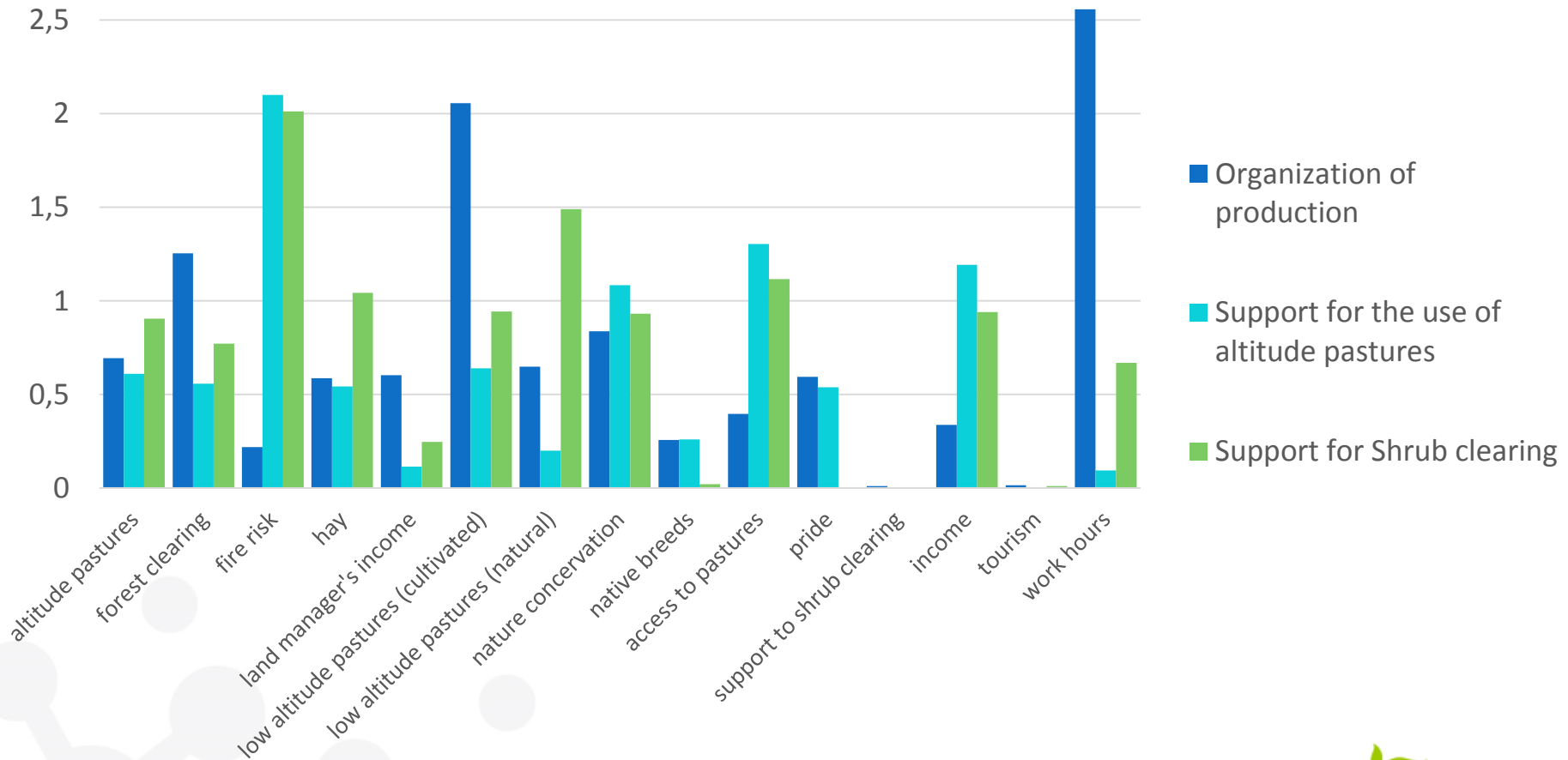


% change to the system by each scenarios



The scenario “Strategies” that can induce the most change and to the mountain landscape in particular through the use of altitude pastures, cleaning of forest and decreasing fire risk

% change to the system by each of the mechanisms from scenario 3



Individual strategies are unlikely to cause meaningful changes to the system

What is can be done to counteract pasture abandonment



Higher shepherd income is not enough



Wide área benefit the value chain, but not the connection with altitude pastures



CAP payments alone do not benefit the mountain system



Shrub clearing in paths and key areas

Obrigada pela vossa atenção
www.med.uevora.pt

